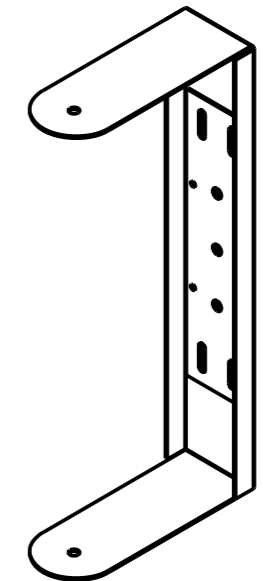
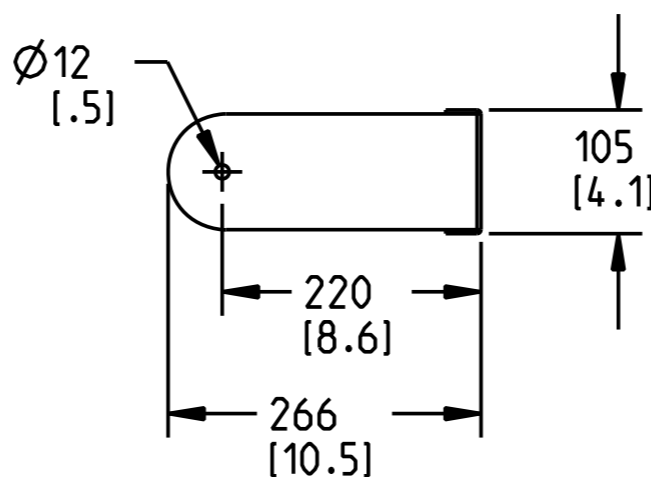
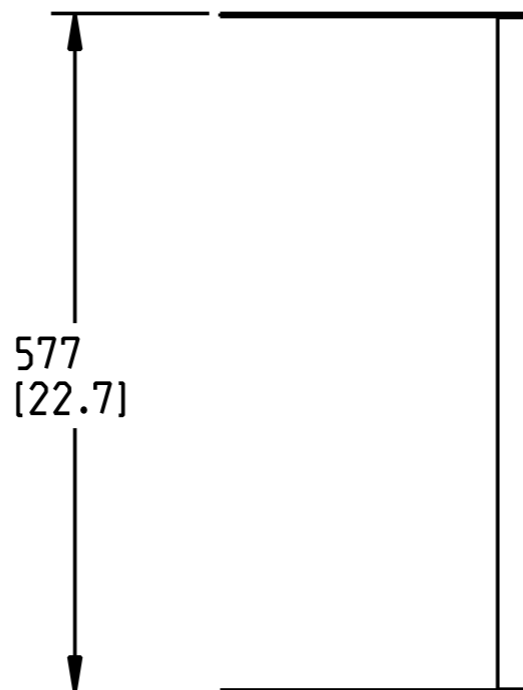
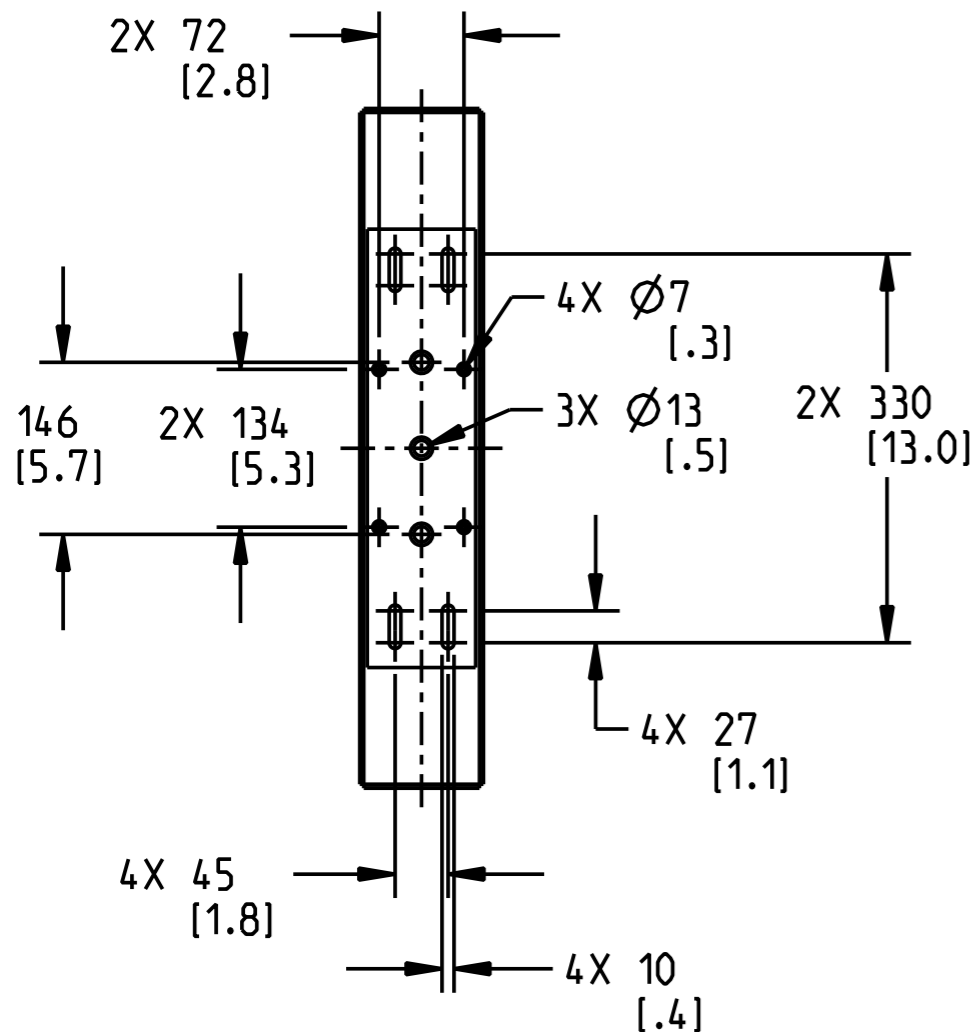


THIS DOCUMENT CONTAINS PROPRIETARY INFORMATION WHICH IS THE PROPERTY OF QSC AUDIO PRODUCTS. THAT MAY NOT BE DISCLOSED, REPRODUCED OR USED WITHOUT EXPRESS WRITTEN CONSENT FROM QSC AUDIO PRODUCTS.

REVISIONS					
REV	ECO	DESCRIPTION	BY	EFF DATE	ISSUED
A	-	RELEASE	JD	19-NOV-12	-



SCALE 0.125

4. PARTS ARE SYMMETRICAL ABOUT CENTER LINES UNLESS OTHERWISE NOTED.
 3. SYMBOL \odot INDICATES SUSPENSION POINT.
 2. TOLERANCES (MM): $X \pm 3$, ANGLES: $\pm 1^\circ$.
 1. NET WEIGHT APPROX. 3.5 KG (8 LBS)
 NOTE: UNLESS OTHERWISE SPECIFIED

UNLESS OTHERWISE SPECIFIED DIMENSIONS IN MILLIMETERS (IN)		
TOLERANCES ARE:		
DECIMALS .X \pm .5 [.02]	DECIMALS .XX \pm .25 [.010]	ANGLES $\pm 1/2$
DEBURR EDGES .25 [.010] R MAX		
MATERIAL		
FINISH		

APPROVALS	DATE (DD-MMM-YY)
DRAWN J. DELARM	16-OCT-12
CHECKED -	-
MFG ENG -	-
QA CHECK -	-
DRAWING INFO: FG-000391-2D.A.3	
MODEL INFO: FG-000391-3D.A.1	

QSC		QSC AUDIO PRODUCTS, LLC 1675 MACARTHUR BOULEVARD COSTA MESA, CA 92626		
ACCESSORY, YOKE MOUNT, AP-5102				
SIZE B	CAGE CODE 00PW 4	DRAWING NO. FG-000391-2D	REV A	
SCALE: 0.156	DO NOT SCALE DRAWING	SHEET	1 OF 1	