



Device Discoverer

Device Discoverer is a Windows application that discovers USL products on the local network. It displays information about each device as described below. Clicking on a device line causes the Device Status to show in the Selected Device Status box. Double clicking a line opens a web browser and connects to the device.

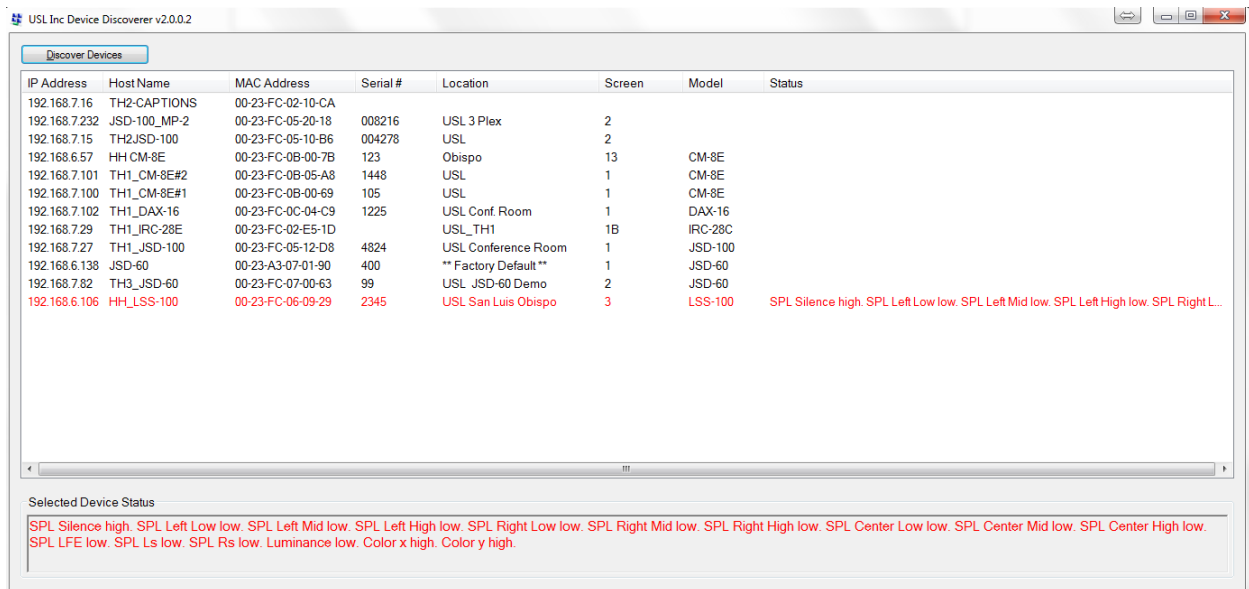


Figure 1 - Device Discoverer User Interface

The Device Discoverer displays the following information for each device discovered on the network.

- IP Address
- NET_BIOS Host Name
- MAC Address
- Serial Number
- Location (Theater Name)
- Auditorium or Screen Number
- Device Model
- Status – In figure 1, the status is displaying logged out of tolerance operation detected by an LSS-100.

Click “Discover Devices” to refresh the device list.

