



MD-110 Installation Guide



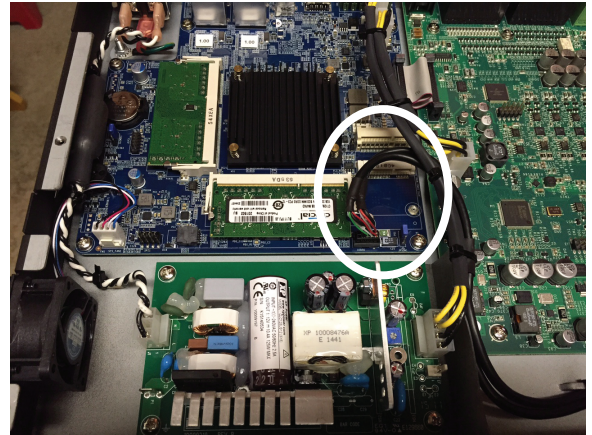
WARNING!: The instructions in this document are to be performed only by the product distributor's trained and qualified technician. These instructions are not provided for the end-user of the equipment.



IMPORTANT!: This document provides the procedure to install the MD-110 Media Drive into a Core 110f advanced DSP appliance. The MD-110 is an mSATA solid state drive specifically formatted, partitioned, and pre-configured for use in Q-SYS Core 110f.



CAUTION!: Solid state drives are delicate electronic assemblies and are highly susceptible to ESD (Electrostatic Discharge). Make sure that proper grounding and handling procedures are followed.



— Figure 1 —

Back Up Your Files!

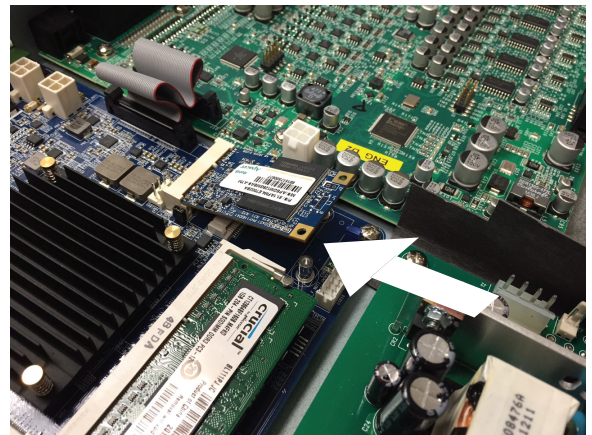
Be sure to back up all media and design files before installing the MD-110 into your Core 110f. Visit www.qsys.com or contact your AET representative if you need additional information regarding file backup procedures.

Required Tools

- Anti-static wrist strap - properly grounded
- Anti-static work mat
- Phillips #1 screwdriver
- Phillips #0 screwdriver

Safety Procedure

1. Make sure that the AC Mains power cord is unplugged from the AC receptacle on the rear panel of the Core 110f.
2. Connect, and put on, the ESD grounded wrist strap.



— Figure 2 —

Installation Procedure

1. Use the #1 Phillips screwdriver to remove the 12 screws securing the top cover to the Core 110f chassis. Set aside for later use.
2. Remove the cover.
3. Locate the MD-110 mounting socket (white) on the blue motherboard. Refer to Figure 1.
4. Carefully remove the MD-110 from its packaging.



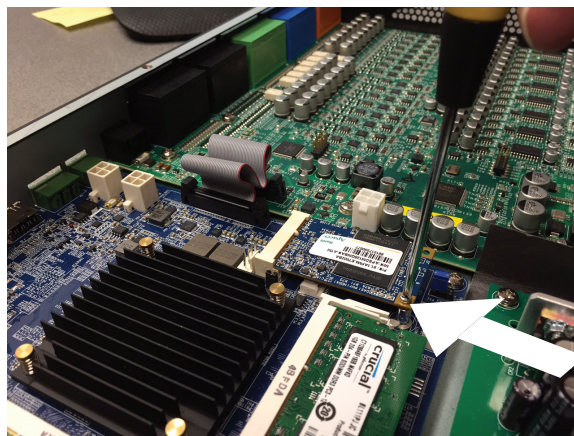
NOTE: The cables have been removed in Figures 2 and 3 for clarity. You do not have to remove any cables to complete this procedure.

5. Insert the MD-110 electrical contacts into the receptacle. The contacts are keyed so they cannot be installed incorrectly. Refer to Figure 2.

TD-000518-00-B



6. Use the #0 Phillips screwdriver and the M2 screw (supplied) to secure the MD-110 to the standoff on the motherboard. Refer to Figure 3.



— Figure 3 —



Knowledge Base

Find answers to common questions, troubleshooting information, tips, and application notes. Link to support policies and resources, including Q-SYS Help, software and firmware, product documents, and training videos. Create support cases.

support.qsys.com

Customer Support

Refer to the Contact Us page on the Q-SYS website for Technical Support and Customer Care, including their phone numbers and hours of operation.

qsys.com/contact-us/

Warranty

For a copy of the QSC Limited Warranty, go to:

qsys.com/support/warranty-statement/

© 2025 QSC, LLC All rights reserved. QSC, the QSC logo, Q-SYS, and the Q-SYS logo are registered trademarks of QSC, LLC in the U.S. Patent and Trademark Office and other countries. Patents may apply or be pending. All other trademarks are the property of their respective owners.

qsys.com/patents
qsys.com/trademarks